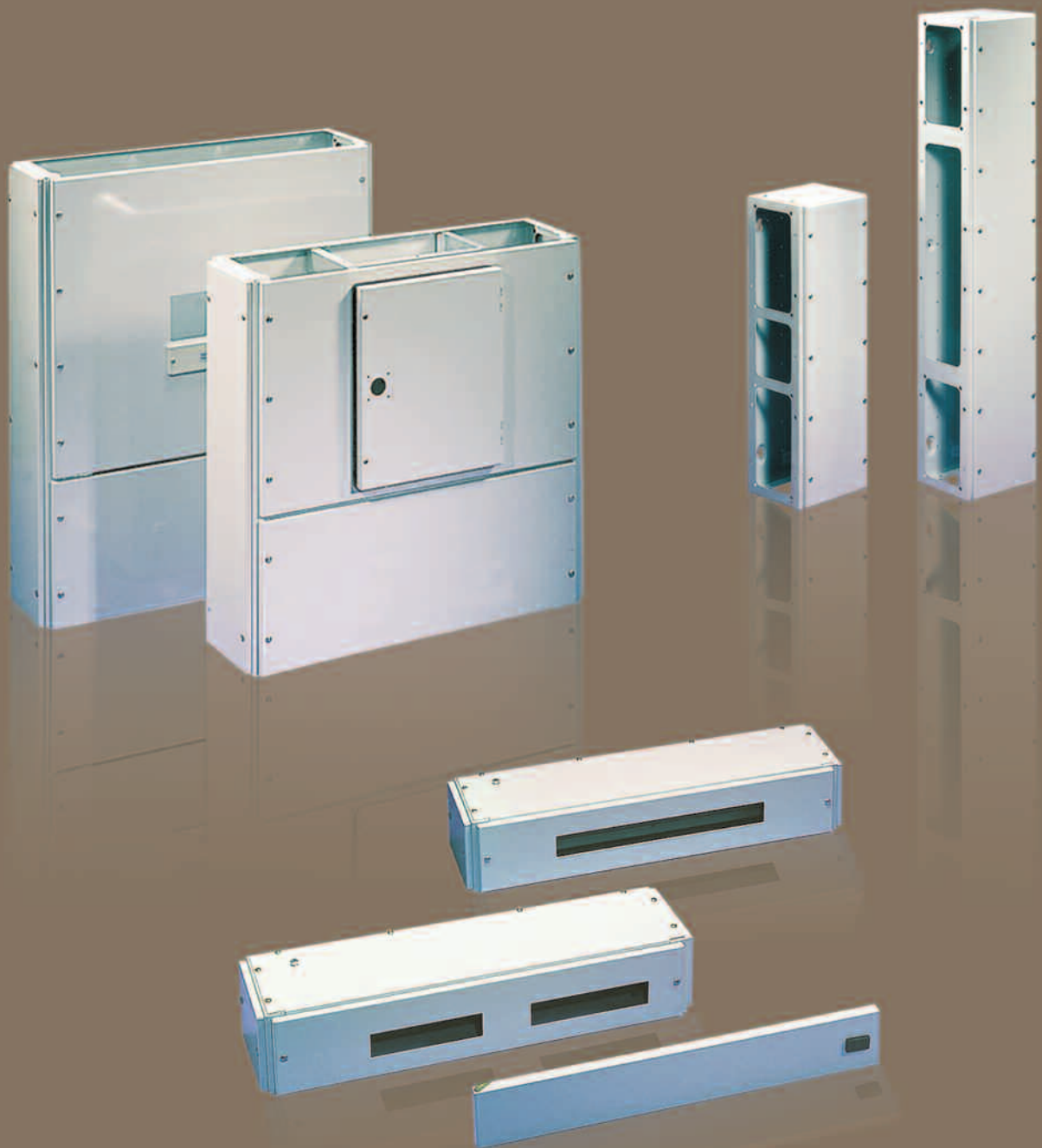




Dorman Smith Loadbank 200 Fuse Switch Panel Boards

Fuse Switch Panel Boards

Loadbank 200 Range (800A Rating)



Overview

Key Features

- ASTA certified short circuit withstand rating
- Allows inclusion of TP&N and four-pole fuse switch distribution
- Generous cable-spreading space for incoming and outgoing cables
- Common width (750mm) and depth (200mm) for all enclosures

Available Options

- 800A panel boards with 6 or 10 outgoing fuse switch ways
- 400A, 630A or 800A fuse switch incomers
- Panel build options include:
 - SP&N MCB distribution board for 17 ways
 - TP&N distribution board with 6 and 12 ways
 - TP&N distribution board with double banks of 12 ways
- General purpose enclosures with uncut front plates
- Metering housings and service centres
- Current transformers

Additional Features

- Add-on incomer units include all copper connections and incoming cable shrouds
- Panel and distribution boards exceed EN 60439-1 requirements
- Fully shielded busbars and interconnections on distribution boards
- Various locking options
- IP4X Ingress Protection

Compliance

Switch fuse panel boards	EN 60439-1
Skeleton switches	EN 60947-3

Based on the modular system employed within Loadbank 250 panel board, Loadbank 200 panel board is designed to fulfil the need for fuse switch panelboards upto 800A. Panel board enclosures are available in either 6 or 10 TP&N outgoing ways featuring devices from 63A to 200A. Form 2 separation is provided as standard, with Form 4 shielding as an available option.

Several incoming options can be selected from 200A to 800A and a comprehensive range of metering facilities for compliance with Building Regulations Part L2 completes this versatile panel board system.

The standard finish is epoxy powder coating in light grey RAL 7035.



Fuse Switch Panel Board System (800A)

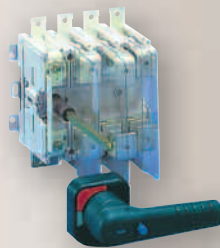


Fuse Switch Panel Boards

- General purpose enclosures
- Cableway extension enclosures
- Stacking kits

Incoming Devices

- Fuse switches (200A-800A)



Circuit Protection Devices

- Fuse switches (63A-200A)

Modular Devices

- Surge protection
- Meters, current transformers and wiring looms
- Contactors
- Timer
- Residual current circuit breaker



Loadbank 200

Fuse Switch Panel Board System Form 2 and 4 50kA-1sec



800A Panel Board Enclosures

- Form 2 as standard
- Form 4 with optional shielding
- IP3X (IP4X with door kit fitted) Ingress Protection
- 750mm wide x 200mm deep
- Integral incoming option available using 200A fuse switch in available outgoing way

No of TP outgoing ways	Modular height	Height (mm)	Weight (kg)	Cat. no.	Optional door kit
6	5	760	59	LF806A	MXD06
10	8	1216	98	LF810A	MXD10

Fuse Switch Panel Board Accessories

Description	Cat. no.
Form 4 shielding for cable up to 70mm ² (1 per device required)	LFS41A
Form 4 shielding for outgoing cables to 150mm ² (1 per device required)	LFS42A
Vertical stacking connection kit	LCFVK
Blank cover for fuse switch handle	LFXHBA



Add-on Incoming Enclosures

- Excludes incoming device (to be ordered separately)
- Supplied with all necessary copper connections
- Incoming terminations fully shrouded
- Supplied with two side plates only
- IP4X Ingress Protection

Current rating (A)	Modular height	Height (mm)	Weight (kg)	Device type	Cat. no.
400	5	762	50	L frame fuse switch	LF1F4A
630/800	6	914	67	N frame fuse switch	LF1F8A



400A Fuse Switch Incoming Devices

- 400A incoming devices for LF1F4A enclosure
- Standard cable termination 300mm²

- Exceeds the requirements of EN 60947-3
- 80kA rms fused short-circuit capacity
- AC23A utilisation category
- Full uninterrupted duty
- 415V AC rated voltage

Incoming device type	Current rating (A)	No. of poles	Max cable termination (mm ²)	Cat. no.
L frame fuse switch	400	TP&N	300	SL3P400N
L frame fuse switch	400	4	300	SL4P400

630A/800A Fuse Switch Incoming Devices

- 630A/800A incoming devices for LF1F8A enclosure
- Standard cable termination 630mm²

Incoming device type	Current rating (A)	No. of poles	Max cable termination (mm ²)	Cat. no.	Cable terminals
N frame fuse switch	630	TP&N	630	SN3P630N	SNCET
N frame fuse switch	800	TP&N	630	SN3P800N	SNCET
N frame fuse switch	630	4	630	SN4P630	SNCET
N frame fuse switch	800	4	630	SN4P800	SNCET

Loadbank 200

Outgoing Devices

63/125A Skeleton Switches

- Exceeds the requirements of EN 60947-3
- 80kA rms fused short-circuit capacity

- AC23A utilisation category
- Full uninterrupted duty
- 415V AC rated voltage

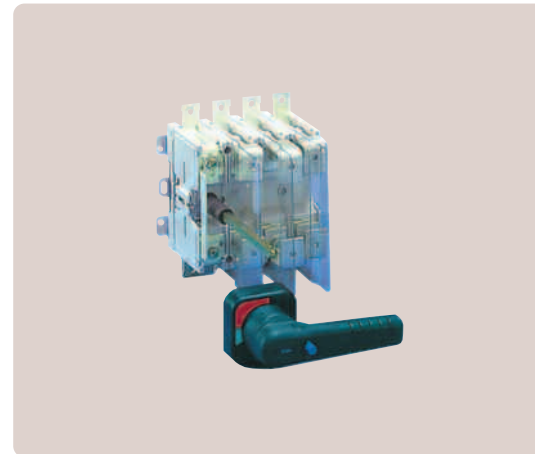
Current rating (A)	1-pole+N cat. no.	3-pole+N cat. no.	4-pole cat. no.
63	-	SF3P63N	SF4P63
100	-	SF3P100N	SF4P100
125	-	SF3P125N	SF4P125

160/200A Skeleton Switches

- Exceeds the requirements of EN 60947-3
- 80kA rms fused short-circuit capacity

- AC23A utilisation category
- Full uninterrupted duty
- 415V AC rated voltage

Current rating (A)	1-pole+N cat. no.	3-pole+N cat. no.	4-pole cat. no.
160	-	SF3P160N	SF4P160
200	-	SF3P200N	SF4P200

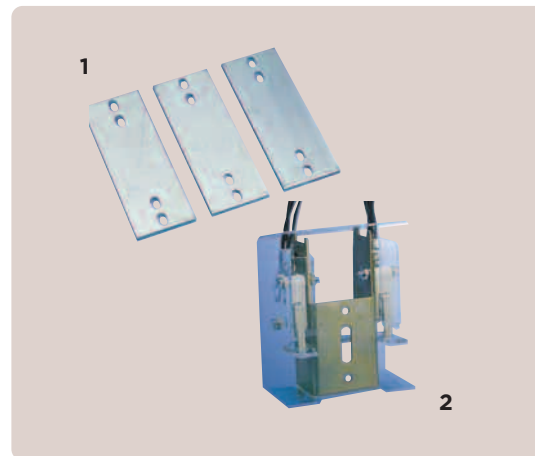


Loadbank 200

Outgoing Devices Accessories

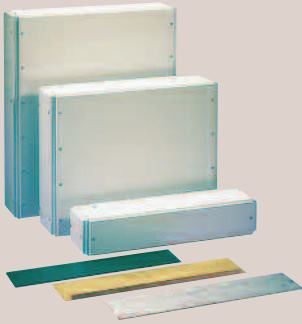
Accessories for Outgoing/Incoming Skeleton Switches

Description	Current rating (A)	Picture	Cat. no.
Solid links (set of 1)	63	1	HFL63
Solid links (set of 1)	100/200	1	HFL200A
2-bank auxiliary switch	63/200	2	SAUX2F
4-bank auxiliary switch	63/200	2	SAUX4F
Terminal shrouds and barriers	63/200	-	SFTSS
Terminal barriers (set of 3)	63/200	-	SFTB
Cable extension terminals (set of 8)	630/800	-	SNCET
Solid links (set of 1)	400	1	HLL400
Solid links (set of 1)	630/800	1	HNL800
2-bank auxiliary switch	400/630/800	2	SAUX2N
4-bank auxiliary switch	400/630/800	2	SAUX4N
6-bank auxiliary switch	400/630/800	2	SAUX6N
Terminal shrouds and barriers	400	-	SLTS
Terminal shrouds and barriers	630/800	-	SNTS
Terminal barriers (set of 3)	400	-	SLTB
Terminal barriers (set of 3)	630/800	-	Supplied



Loadbank 200

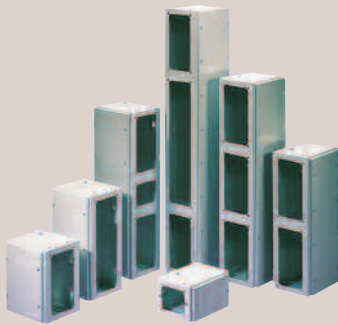
Add-on Enclosures



General Purpose Enclosures

- IP4X Ingress Protection
- Enclosures are 750mm wide x 200 deep
- No top or bottom plates supplied (supplied with panel board)

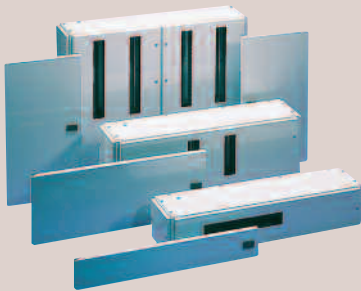
Description	Modular height	Height (mm)	Cat. no.
General purpose enclosure	1	152	LEBM1
General purpose enclosure	2	305	LEBM2
General purpose enclosure	3	457	LEBM3
General purpose enclosure	4	609	LEBM4
General purpose enclosure	5	762	LEBM5
General purpose enclosure	6	914	LEBM6



Cableway Extension Enclosures

- IP4X Ingress Protection
- Recommend for cables above 70mm²
- 250mm wide x 200mm deep
- No side plates supplied (supplied with panel board)

Description	Modular height	Height (mm)	Cat. no.
Cableway	1	152	LECM1
Cableway	2	305	LECM2
Cableway	3	457	LECM3
Cableway	4	609	LECM4
Cableway	5	762	LECM5
Cableway	6	914	LECM6
Cableway	8	1219	LECM8

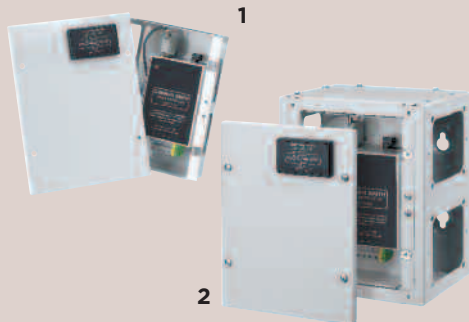


MCB Distribution Board and Service Centre

- IP3X (IP4X with door fitted) Ingress Protection
- MCB distribution boards have fully shielded busbars and interconnections
- Space saving twin option TP&N distribution board option

Description	Modular height	Height (mm)	Cat. no.	Door kit cat. no.
17 MCB way SP&N distribution board	1	152	LDS17	LD1DS
6 TP way TP&N distribution board	2	305	LDT106X	LD1D06X
12 TP way TP&N distribution board	3	457	LDT112X	LD1D12X
2 x 12 TP way TP&N distribution board	4	609	LDT212X*	LD2D12X
24 way modular service centre	1	152	LDS24	LD1DS

*Only double module RCBOs can be fitted in this enclosure.



Transient Voltage Surge Protector Cableway Mounting Kits

- Easily installed within a standard cableway (2 modules onward)
- DIN-rail mounting for triple-pole MCB
- C/W 30Ka three-phase surge protector
- Remote status indication
- Site fault indication

Description	Height (mm)	Cat. no.
Cableway mounting frame c/w surge protector & remote indicator (1)	304	LECK2SM
2 module enclosure c/w surge protector & remote indicator (2)	304	LECK2SP

Loadbank 200

Metering Accessories

For easy selection of metering please refer to the charts on pages 56.

Cableway Metering Door Kits

- Incoming and outgoing metering utilises cableway extension boxes
- Metering door kits are available sized to the cableway extension boxes and are designed for panel mounted meters
- Includes DIN-rail for facility to mount current transformers and fuses

Description	Height	Cat. no.
2 module metering door kit, excluding CTs and control wiring	2	LECMD2
3 module metering door kit, excluding CTs and control wiring	3	LECMD3
4 module metering door kit, excluding CTs and control wiring	4	LECMD4
5 module metering door kit, excluding CTs and control wiring	5	LECMD5
6 module metering door kit, excluding CTs and control wiring	6	LECMD6
8 module metering door kit, excluding CTs and control wiring	8	LECMD8



Metering

Description	Cat. no.
Digital multi-function meter with one pulse output	INT-1630-M-5-M-100
Digital multi-function meter with one pulse output and one RS485 output	INT-1630-M-5-M-110
Digital kilowatt hour meter with pulse output	CI1-01-PUL
Digital multi-function meter with pulse output	CI3-01-PUL
Pulse Output for Ci meter	CI-PUL-01
RS485 Modbus Output for Ci meter	CI-MOD-01



Incoming Current Transformers

Description	Max cable size mm ²	Cat. no.
400A current transformer (sold singular)	185*/240**	M63N-400/5
600A current transformer (sold singular)	185*/240**	M63N-600/5
800A current transformer (sold singular)	240	M93L-800/5

Outgoing Current Transformers

Description	Max cable size mm ²	Cat. no.
100A 3-in-1 CT Case size 35mm	95*/150**	M3N1-35-100/5
125A 3-in-1 CT Case size 35mm	95*/150**	M3N1-35-125/5
200A 3-in-1 CT Case size 35mm	95*/150**	M3N1-35-200/5
250A 3-in-1 CT Case size 35mm	95*/150**	M3N1-35-250/5

*Using standard lugs

**Using reduced palm width lugs

Metering Harnesses

Description	Cat. no.
Incoming meter loom	LBWI
Voltage tap off loom for outgoing metering	LBWP
CT harness for 1 outgoing meters	LBWCT
Power loom for 6 outgoing meters	LBWM6



Loadbank 200 Selection Chart - Enclosures

800A Panel Boards - Form 2				
Outgoing device	Outgoing ways	Height (mm)	Weight (kg)	Cat. no.
Fuse switch	6	5 modules	59	LF806A
Fuse switch	10	8 modules	98	LF810A

800A Panel Boards - Form 4 Conversion				Cat. no.
Form 4 shields for outgoing cables up to 70mm ²				LFS41A
Form 4 shields for outgoing cables up to 150mm ²				LFS42A
Vertical connection kit for 800A panelboard				LCFVK
Blank cover plate for fuse switch handle				LFXHBA

Incoming Units				
Device type housing	Current rating (A)	Height	Weight (kg)	Cat. no.
Fuse switch	400	5 modules	48.5	LF1F4A
Fuse switch	630/800	6 modules	66.5	LF1F8A

Cableways			
Height		Weight (kg)	Cat. no.
1 module		2	LECM1
2 modules		4	LECM2
3 modules		6	LECM3
4 modules		8	LECM4
5 modules		8	LECM5
6 modules		12	LECM6
8 modules		14	LECM8

Surge Protection Cableway Mounting Kits		
Description	Height (mm)	Cat. no.
Cableway mounting frame c/w surge protector & remote indicator	304	LECK2SM
2 module enclosure c/w surge protector & remote indicator	304	LECK2SP

General Purpose Enclosures		
Height	Weight (kg)	Cat. no.
1 module	4	LEBM1
2 modules	10	LEBM2
3 modules	16	LEBM3
4 modules	22	LEBM4
5 modules	28	LEBM5
6 modules	34	LEBM6

Service Centres					
Type	Outgoing ways	Height	Weight (kg)	Cat. no.	Door kit
Service centre (DIN units)	24 DIN	1 module	10	LDS24	LD1DS

MCB Distribution Boards

SP&N				
Outgoing ways	Height	Weight (kg)	Enclosure cat. no.	Door kit cat. no.
17	1 module	15	LDS17	LD1DS

TP&N				
Outgoing ways	Height	Weight (kg)	Enclosure cat. no.	Door kit cat. no.
6	2 modules	23	LDT106X	LD1D06X
12	3 modules	30	LDT112X	LD1D12X
2x12	4 modules	35	LDT212X	LD2D12X

Loadbank 200 Selection Chart - Incoming Devices and Accessories

Loadbank 200 Incoming Devices

Fuse Switches			
Device type	Current rating (A)	3-pole+N cat. no.	4-pole cat. no.
Skeleton switch	200	SF3P200N	SF4P200
Skeleton switch	400	SL3P400N	SL4P400
Skeleton switch	630	SN3P630N	SN4P630
Skeleton switch	800	SN3P800N	SN4P800

Accessories for Incoming Skeleton Switches

Description	Current rating (A)	Picture	Cat. no.
Cable extension terminals (set of 8)	630/800	-	SNCET
Solid links (set of 1)	400	1	HLL400
Solid links (set of 1)	630/800	1	HNL800
2-bank auxiliary switch	400/630/800	2	SAUX2N
4-bank auxiliary switch	400/630/800	2	SAUX4N
6-bank auxiliary switch	400/630/800	2	SAUX6N
Terminal shrouds and barriers	400	-	SLTS
Terminal shrouds and barriers	630/800	-	SNTS
Terminal barriers (set of 3)	400	-	SLTB
Terminal barriers (set of 3)	630/800	-	Supplied

Metering

Description	Height (modules)	Height (mm)	Current rating (A)	Cable size (mm)	Cat. no.
Metering door kit	2	304	-	-	LECMD2
Metering door kit	3	456	-	-	LECMD3
Metering door kit	4	608	-	-	LECMD4
Metering door kit	5	760	-	-	LECMD5
Metering door kit	6	912	-	-	LECMD6
Metering door kit	8	1216	-	-	LECMD8
Incoming meter loom	-	-	-	-	LBWI
Voltage tap off for outgoing meter	-	-	-	-	LBWP
CT harness for 1 outgoing meter	-	-	-	-	LBWCT
Meter power loom for 1 outgoing meter	-	-	-	-	LBWM6
3-in-1 current transformers	-	-	100	95	M3N1-35-100/5
3-in-1 current transformers	-	-	125	95	M3N1-35-125/5
3-in-1 current transformers	-	-	150	95	M3N1-35-150/5
3-in-1 current transformers	-	-	200	95	M3N1-35-200/5
3-in-1 current transformers	-	-	250	95	M3N1-35-250/5
Current transformer	-	-	-	185	M63N-400/5
Current transformer	-	-	-	185	M63N-600/5
Current transformer	-	-	-	240	M93L-800/5
1-phase/3phase kWh meter with pulse	-	-	-	-	CI1-01-PUL
1-phase/3phase MF meter with pulse	-	-	-	-	INT-1630-M-5-M-100
1-phase/3phase MF meter with pulse and Modbus	-	-	-	-	INT-1630-M-5-M-110
1-phase/3phase MF meter with pulse	-	-	-	-	CI3-01-PUL
Optional pulse plug in module for Ci meter	-	-	-	-	CI-PUL-01
Optional RS485 Modbus plug in module for Ci meter	-	-	-	-	CI-MOD-01

Loadbank 200 Selection Chart - Outgoing Fuse Switches and Accessories

800A Panelboard	
Description	Cat. no.
Vertical connection kit	LCFVK
Blank cover plate for fuse switch handle	LFXHBA

Main Enclosures - Insulation & Plates	
Horizontal insulation kit	MXEPF
Steel end plate	LGES

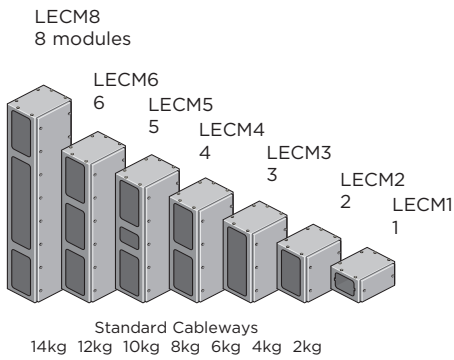
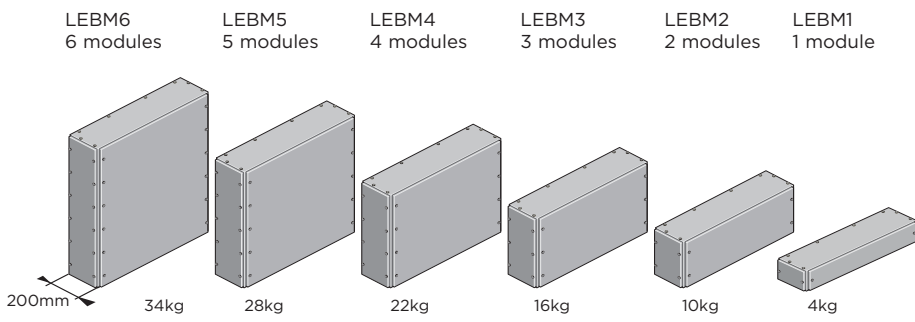
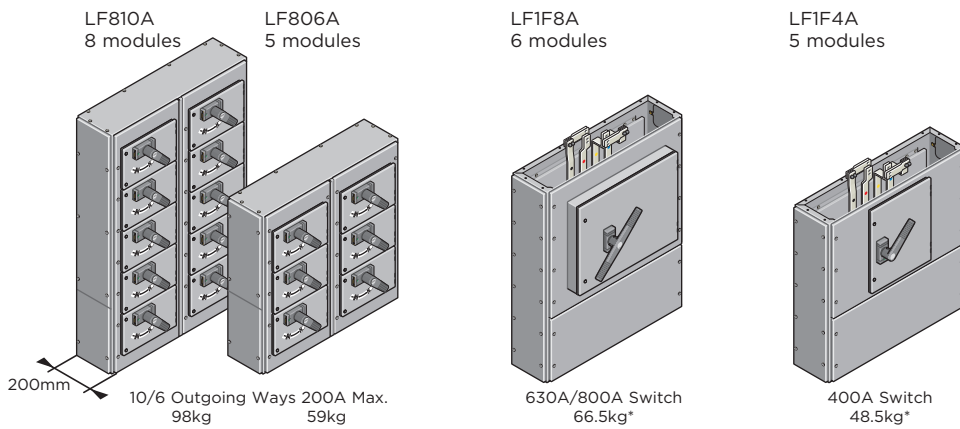
Door Locking	
Door lock/key kit	DBXCL
Padlocking kit for door kits	DBXPL

Outgoing Fuse Switches				
Device	Current rating (A)	1-pole+N cat.no.	3-pole+N cat. no.	4-pole cat. no.
Skeleton switch	63	-	SF3P63N	SF4P63
Skeleton switch	100	SF1P100N	SF3P100N	SF4P100
Skeleton switch	125	-	SF3P125N	SF4P125
Skeleton switch	160	-	SF3P160N	SF4P160
Skeleton switch	200	-	SF3P200N	SF4P200

Accessories		
Description	Current rating (A)	Cat. no.
Solid links (set of 1)	63	HFL63
Solid links (set of 1)	100/200	HFL200A
2-bank auxiliary switch	63/200	SAUX2F
4-bank auxiliary switch	63/200	SAUX4F
Terminal shrouds and barriers	63/200	SFTSS
Terminal barriers (set of 3)	63/200	SFTB

Loadbank 200

Dimensions and Outline Drawings



Cableway 250mm	Main Enclosure 750mm
	8 Module Height-1219mm
	6 Module Height-914mm
	5 Module Height-762mm
	4 Module Height-609mm
	3 Module Height-457mm
	2 Module Height-304mm
	1 Module Height-152mm

Depth of all enclosures-200mm

Loadbank 200 Metering Selection

Loadbank 200

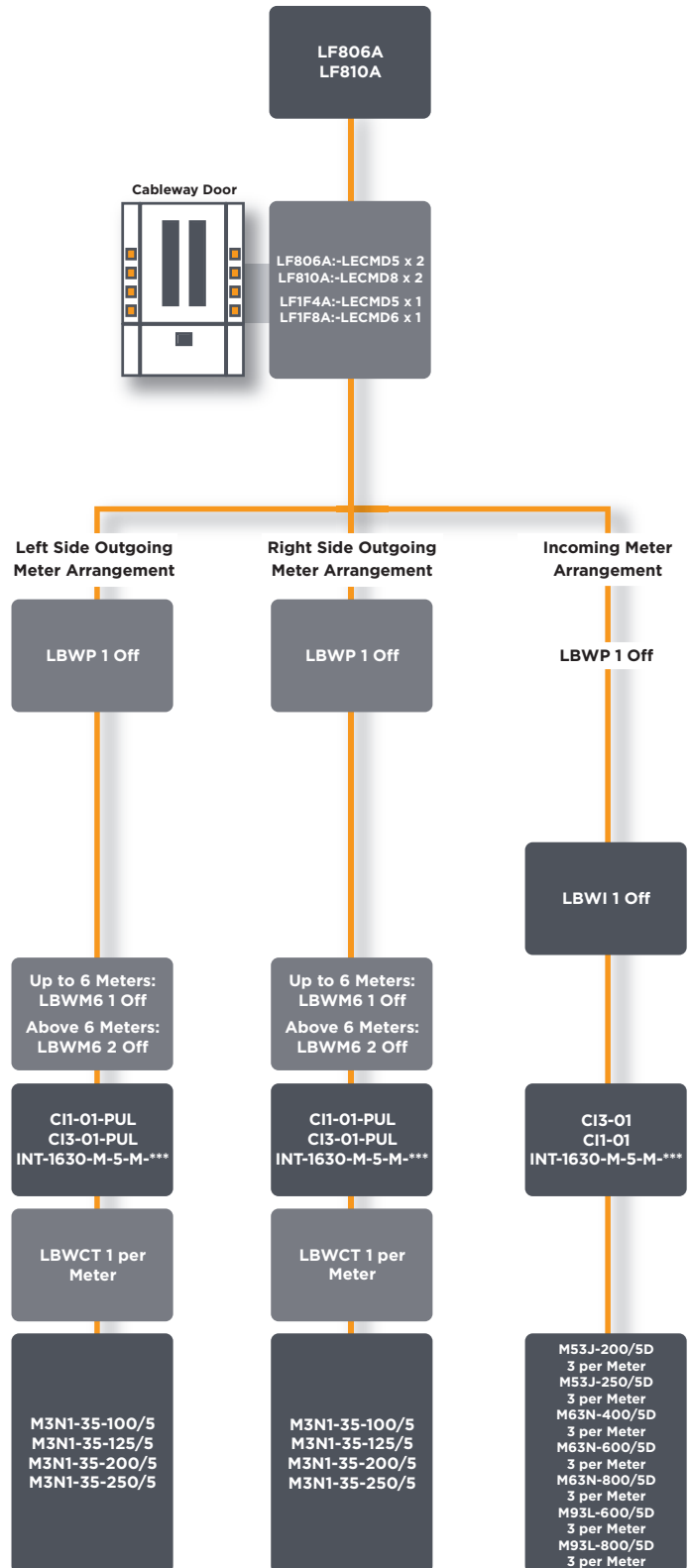
The Loadbank 200 metering facilities utilise standard cableway extension enclosures with optional door kits designed for panel mounted meters. The size of the cableway will determine the corresponding metering door kit. Where cable sizes exceed 70mm a recommendation would be to include two cableway extension enclosures to facilitate easy wiring. The same could be advised when fully populating an 18 way panel board with meters. Current transformers and fuses can be DIN-rail mounted within the cableways using the facilities provided within the optional door kits.

Panel-board enclosures	
Description	Cat. no.
800A, 6 way, Form 4	LF806A
800A, 10 way, Form 4	LF806A

Description	Cat. no.
2 module metering mounting kit, (2 meter positions)	LECMD2
3 module metering mounting kit, (3 meter positions)	LECMD3
4 module metering mounting kit, (4 meter positions)	LECMD4
5 module metering mounting kit, (6 meter positions)	LECMD5
6 module metering mounting kit, (6 meter positions)	LECMD6
8 module metering mounting kit, (9 meter positions)	LECMD8

Description	Cat. no.
3-in-1 100A current transformers	M3N1-35-100/5
3-in-1 125A current transformers	M3N1-35-125/5
3-in-1 200A current transformers	M3N1-35-200/5
3-in-1 250A current transformers	M3N1-35-250/5
400A current transformer (sold singular)	M63N-400/5D
630A current transformer (sold singular)	M63N-600/5D
800A current transformer (sold singular)	M93L-800/5D

Description	Cat. no.
Digital multi-function meter with one pulse outputs	INT-1630-M-5-M-100
Digital multi-function meter with one pulse output and one RS485 output	INT-1630-M-5-M-110
Digital kilowatt hour meter with one pulse output	CI1-01-PUL
Digital multi-function meter with one pulse current output	CI3-01-PUL



About TE Connectivity

TE Connectivity is a global, \$12.1 billion company that designs and manufactures over 500,000 products that connect and protect the flow of power and data inside the products that touch every aspect of our lives. Our nearly 100,000 employees partner with customers in virtually every industry – from consumer electronics, energy and healthcare, to automotive, aerospace and communication networks – enabling smarter, faster, better technologies to connect products to possibilities.

While TE has made every reasonable effort to ensure the accuracy of the information in this catalog, TE does not guarantee that it is error-free, nor does TE make any other representation, warranty or guarantee that the information is accurate, correct, reliable or current. TE reserves the right to make any adjustments to the information contained herein at any time without notice. TE expressly disclaims all implied warranties regarding the information contained herein, including, but not limited to, any implied warranties of merchantability or fitness for a particular purpose. The dimensions in this catalog are for reference purposes only and are subject to change without notice. Specifications are subject to change without notice. Consult TE for the latest dimensions and design specifications. Dorman Smith three line logo, Integra, Loadline, TE connectivity (logo) and TE Connectivity are trademarks of the TE Connectivity Ltd. family of companies. Crompton is a trademark of Crompton Parkinson and is used by TE Connectivity Ltd. under a licence. Other logos, product and Company names mentioned herein may be trademarks of their respective owners.

TE Energy - innovative and economical solutions for the electrical power industry: cable accessories, connectors & fittings, insulators & insulation, surge arresters, switching equipment, street lighting, power measurement and control.

Tyco Electronics UK Ltd

TE Energy
Freebournes Road
Witham, Essex CM8 3AH

Phone: +44 (0)870 870 7500
Fax: +44 (0)870 240 5289
Email: dormansmithswitchgear@te.com
E-fax: +44 (0)1793 602431

www.dormansmithswitchgear.com
www.energy.te.com

