



Dorman Smith Loadbank 250 MCCB Panel Boards

MCCB Panel Boards

Loadbank 250 Range (400A and 800A Ratings)



Overview

Key Features

- ASTA certified busbars with a short-circuit withstand rating of 36kA for 1 second (400A)
- ASTA certified busbars with a short-circuit rating of 50kA for 1 second (800A)
- Allows mounting of YA3, Y5, Y6 or Y7 MCCBs and switch disconnectors
- Single frame size for outgoing 16A to 250A MCCBs
- Generous cable-spreading space for incoming and outgoing cables
- Common width (750mm) and depth (200mm) for all enclosures

Available Options

- 400A and 800A panel boards with 6, 12 or 18 triple-pole outgoing ways with Y6/Y7 or YA3 incoming devices, with Form 3 separation
- 800A panel boards with 6 or 10 TP&N or four-pole outgoing ways with fuse switch/MCCB incomer, with Form 4 separation
- Panel build options include:
 - Range of MCB distribution boards
 - General purpose enclosures with uncut front plates
 - Metering housings and service centres
 - Current transformers
 - Cableway enclosures

Compliance

Panel boards	EN 61439-2
MCCBs	EN 60947-2
MCBs	EN 60898
RCCBs	EN 61008
RCBOs	EN 61009
Skeleton Switches	60947-3

Loadbank 250 modular enclosure system is engineered to provide unrivalled flexibility and build simplicity needed to produce a wide range of power distribution solutions. TP&N busbars of 400A and 800A comprising of three sizes of 6, 12, 18 TP outgoing ways allow installers to cover a multitude of commercial and industrial applications.

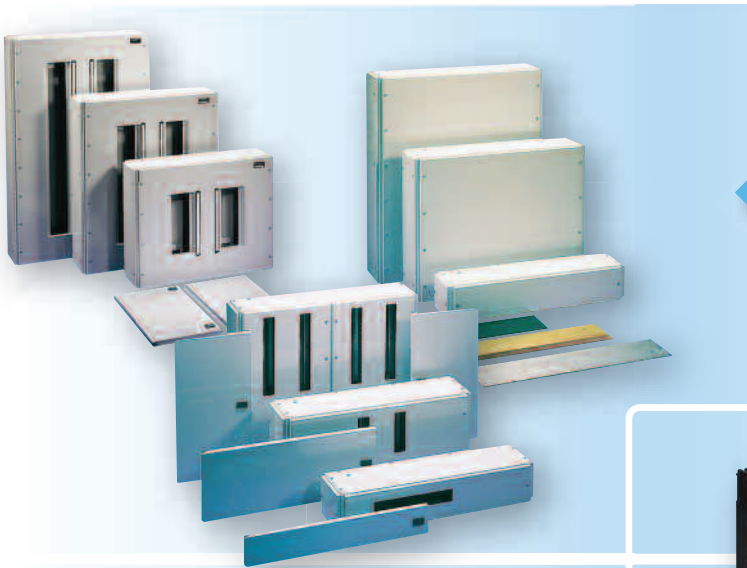
Featuring circuit breakers from 16A to 400A to be fitted as outgoing circuits, integral MCB distribution boards, contactors, timers complemented by a new range of incoming and outgoing metering facilities completes the Loadbank 250 panel board range.

Loadbank 250 panel boards house the incomer and outgoing units in separate, adjoining enclosures to allow the widest range of possible circuit permutations, including oversized outgoing circuits, to be accommodated within a common format. The standard finish is epoxy powder coating in light grey RAL 7035.

Loadbank 250 single module is 152mm high.



MCCB Panel Boards (400A and 800A Rating)



MCCB Panel Boards

- Service centres
- Cableway extension chambers
- General purpose enclosures
- TP&N distribution boards

Incoming Devices

- Switch disconnector
- Moulded case circuit breakers
- Fuse combination units



Circuit Protection Devices

- Moulded case circuit breakers (upto 250A or 400A max)

Modular Devices

- Surge protection
- Meters, current transformers and wiring looms
- Contactors
- Timer
- Earth leakage device



Loadbank 250

250A/400A Panel Board Form 3 36kA-1sec



Fitted with incoming housing and metering

400A Panel Board Enclosures

- Form 3 as standard
- Incoming enclosures and devices to be ordered separately
- ASTA certified busbars rated at 36kA-1sec

No of TP outgoing ways	Modular height	Height (mm)	Width (mm)	Depth (mm)	Cat. no.	Door kit cat. no.
6	4	609	750	200	LB406YA3	LBDD06
12	6	914	750	200	LB412YA3	LBDD12
18	8	1219	750	200	LB418YA3	LBDD18

400A Panel Board Accessories

Description	Cat. no.
Door cylinder lock	DBXCL
Door padlock device	DBXPL
3-pole blanking piece	LBBP3PYA3
Steel end plate	LGES
Panel board stacking kit	LBCK4
Busbar extension terminals with shields to connect to top of panel board	LBSKE

250A/400A Add-on Incoming Enclosures

- Supplied with all necessary connections
- Incoming devices to be ordered separately

Current rating	Device type	Modular height	Height (mm)	Cat. no.	Neutral link
250	YA3 MCCB	3	457	LB1YA3	YA3NL
400	Y6 MCCB	5	762	LB1Y6	Standard
400	Direct connection	2	305	LBDR4	Standard
200	F frame fuse switch	3	457	LB1F2A	Standard
400	L frame fuse switch	5	762	LB1F4A	Standard

250A Max Incoming Devices

- Up to 250A Incoming devices for LB1YA3
- Standard cable termination 95mm²
- Maximum cable termination is 150mm² using reduced palm width M8 cable lugs
- MCCBs have thermal and magnetic overloads except switch disconnectors

Incoming device type	Current rating (A)	No. of poles	Cat. no.
Switch disconnector	250	3	YA3B3P250D
MCCB	160	3	YA3N3P160T
MCCB	200	3	YA3N3P200T
MCCB	250	3	YA3N3P250T
Switch disconnector	250	4	YA3B4P250D
MCCB	160	4	YA3N4P160T
MCCB	200	4	YA3N4P200T
MCCB	250	4	YA3N4P250T

400A Incoming Devices

- 400A Incoming devices for LB1Y6
- Standard cable termination 240mm²

Incoming device type	Current rating (A)	No. of poles	Cat. no.
Switch disconnector	400	3	Y6B3P400D
MCCB	400	3	Y6H3P400T5
Switch disconnector	400	4	Y6B4P400D
MCCB	400	4	Y6H4P400T5

200/400 Fuse Switch Devices

- 200A Incoming devices for LB1F2A
- 400A Incoming devices for LB1F4A

Incoming device type	Current rating (A)	No. of poles	Cat. no.
F frame fuse switch ex fuses	200A	3	SF3P200N
F frame fuse switch ex fuses	200A	4	SF4P200
L frame fuse switch ex fuses	400A	3	SL3P400N
L frame fuse switch ex fuses	400A	4	SL4P400



Loadbank 250

800A Panel Board Form 3 50kA-1sec

800A Panel Board Enclosures

- Form 3 as standard
- Incoming enclosures and devices to be ordered separately
- ASTA certified busbars rated at 50kA-1sec

No of TP outgoing ways	Modular height (mm)	Height (mm)	Width (mm)	Depth (mm)	Cat. no.	Door kit cat. no.
6	4	609	750	200	LB806YA3	LBDD06
12	6	914	750	200	LB812YA3	LBDD12
18	8	1219	750	200	LB818YA3	LBDD18

800A Panel Board Accessories

Description	Cat. no.
Door cylinder lock	DBXCL
Door padlock device	DBXPL
3-pole blanking piece	LBBP3PYA3
Panel board stacking kit	LBCK8
Busbar extension terminals with shields to connect to top of panel board	LBSKE
Steel end plate	LGES
Horizontal insulation kit	MXEPF

400A/800A Add-on Incoming Enclosures

- Supplied with all necessary connections
- Incoming devices to be order separately

Current rating	Device type	Modular height	Height (mm)	Cat. no.	Neutral link
800A Panel boards					
400/630A	Y6 MCCB	5	762	LB1Y6	Standard
800A	Direct connection	3	457	LBDR8	Standard
800A	Y7 MCCB	6	912	LB1Y7	Standard

630A Incoming Devices

- 630A Incoming devices for LB1Y6
- Standard cable termination 240mm²
- Upto 250A or 400A

Incoming device type	Current rating (A)	No. of poles	Cat. no.
Switch disconnecter	630	3	Y6B3P630D
MCCB	630	3	Y6H3P630T5
Switch disconnecter	630	4	Y6B4P630D
MCCB	630	4	Y6H4P630T5

800A Incoming Devices

- 800A Incoming devices for LB1Y7
- Standard cable termination 300mm²
- LB1Y7 Neutral link supplied

Incoming device type	Current rating (A)	No. of poles	Cat. no.
Switch disconnecter	800	3	Y7B3P800D
MCCB	800	3	Y7J3P1000E*
Switch disconnecter	800	4	Y7B4P800D
MCCB	800	4	Y7J4P1000E*

* MCCB must be set for 800A maximum.



Loadbank 250

400A and 800A, Form 3 Outgoing Devices and Accessories



Outgoing YA3 MCCB Devices

- Standard cable termination 95mm²
- Maximum cable termination is 150mm² using reduced palm width M8 cable lugs
- Triple-pole MCCBs have thermal and magnetic overloads
- Single-pole MCCBs have fixed thermal and magnetic overloads

Device type	Current rating (A)	1-pole cat. no. (fixed overloads)	3-pole, 25kA cat. no. (adjustable overloads)	3-pole, 36kA cat. no. (adjustable overloads)	3-pole, 65kA cat. no. (adjustable overloads)
YA3 frame	16	YA3N1P16T	-	-	-
YA3 frame	20	YA3N1P20T	YA3N3P20T	YA3S3P20T	YA3J3P20T
YA3 frame	32	YA3N1P32T	YA3N3P32T	YA3S3P32T	YA3J3P32T
YA3 frame	40	YA3N1P40T	-	-	-
YA3 frame	50	YA3N1P50T	YA3N3P50T	YA3S3P50T	YA3J3P50T
YA3 frame	63	YA3N1P63T	YA3N3P63T	YA3S3P63T	YA3J3P63T
YA3 frame	80	YA3N1P80T	-	-	-
YA3 frame	100	YA3N1P100T	YA3N3P100T	YA3S3P100T	YA3J3P100T
YA3 frame	125	YA3N1P125T	YA3N3P125T	YA3S3P125T	YA3J3P125T
YA3 frame	160	YA3N1P125T	YA3N3P160T	YA3S3P160T	YA3J3P160T
YA3 frame	200	-	YA3N3P200T	YA3S3P200T	YA3J3P200T
YA3 frame	250	-	YA3N3P250T	YA3S3P250T	YA3J3P250T



Outgoing YA5 MCCB Devices

- Standard cable termination 95mm²
- Maximum cable termination 185mm² using reduced palm width M8 cable lugs
- MCCBs have adjustable overloads
- For use with LB802YA5 (twin YA5 outgoing housing - page 66)

Device type	Current rating (A)	25kA cat. no.	50kA cat. no.
YA5 Frame	160A-250A	YA5N3P250T	YA5H3P250T
YA5 Frame	250A-400A	YA5N3P400T	YA5H3P400T

YA3 and YA5 MCCB Accessories

Description	Cat. no.
YA3 3P cable clamps (35-120mm ²)	YA3CC3P
YA3 4P cable clamps (35-120mm ²)	YA3CC4P
YA5 3P cable clamps (95-240mm ²)	YA5CC3P
YA5 4P cable clamps (95-240mm ²)	YA5CC4P
Dolly locking device	YADL1
100-120V AC shunt trip	YAST115AC
200-240V AC shunt trip	YAST240AC
380-450V AC shunt trip	YAST450AC
24V DC shunt trip	YAST24DC
100-120V AC under-voltage release	YAUVR120AC
200-240V AC under-voltage release	YAUVR240AC
380-450V AC under-voltage release	YAUVR450AC
24V DC under-voltage release	YAUVR24DC
YA3 3P terminal shield	YA3TS3P
YA3 4P terminal shield	YA3TS4P
YA5 3P terminal shield	YA5TS3P
YA5 4P terminal shield	YA5TS4P

Loadbank 250

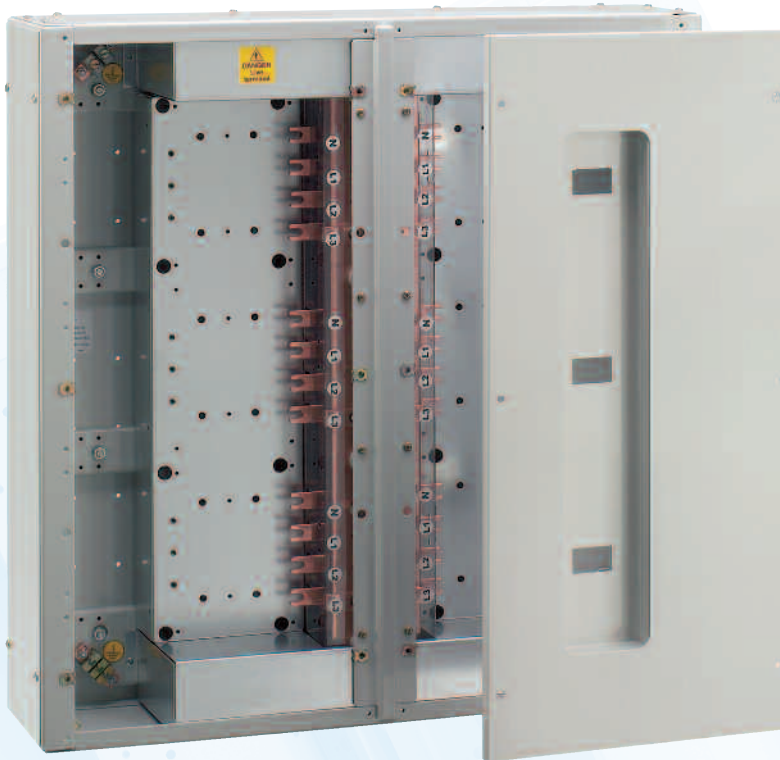
800A Form 4 MCCB Panel Board

The Form 4 panel board range features a 800A TP&N four-pole busbar assembly comprises of two stackable designs of 6 and 10 TP&N ways. Three incoming enclosures are available with MCCB or fuse switch incoming options offering a cost effective, off the shelf solution for projects which require Form 4 separation.

A comprehensive range of general purpose add-on units and cableways with metering options complete this versatile range.

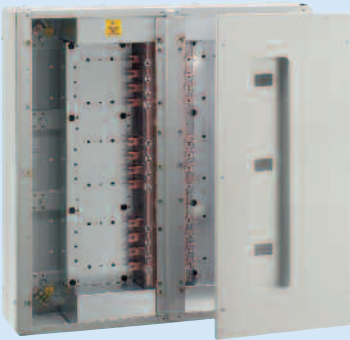
Features

- Exceeds EN60439-1
- ASTA certified busbars with a short-circuit withstand rating of 50kA-1sec
- Form 3 as standard
- Form 4 with Form 4 shielding fitted
- IP4X Ingress Protection
- Single frame size outgoing triple-pole MCCBs from 16A-250A
- Common width (750mm) and depth (200mm) for all enclosures
- Fully rated neutrals
- Does not accept 1-pole outgoing devices



Loadbank 250

800A Panel Board Form 4 50kA-1sec



800A Panel Boards - Form 4

- No provision for 1-pole MCCBs
- Form 3 as standard
- Form 4 with optional shielding
- IP3X (IP4X with door kit fitted) Ingress Protection
- 750mm wide x 200mm deep
- Spare busbar terminal covers/blanking plates are to be ordered separately

No of TP outgoing ways	Modular height	Height (mm)	Weight (kg)	Cat. no.	Optional door kit
6	5	760	59	LF806YA	MXD06
10	8	1216	98	LF810YA	MXD10

800A Panel Board Accessories

Description	Cat. no.
Form 4 shielding for cable up to 70mm ²	LFS41YA
Form 4 shielding for outgoing cables to 150mm ²	LFS42YA
Vertical stacking connection kit	LCFVK
Blanking plate for unused way	YA3F4BP



Add-on Incoming Enclosures

- Form 4 as standard
- IP4X Ingress Protection

Current rating (A)	Modular height	Height (mm)	Weight (kg)	Device type	Cat. no.	Connection kit required
400	5	762	98	L frame fuse switch	LF1F4A	-
630/800	8	1216	66.5	N frame fuse switch	LF1F8A	-
400-800	5	762	45.2	Y6 MCCB/ MCCB switch disconnecter	MMS15Y*	MCFMY6

*Neutral link supplied

400A Fuse Switch Incoming Devices

- 400A Incoming devices for LF1F4A enclosure
- Standard cable termination 240mm²

Incoming device type	Current rating (A)	No. of poles	Cat. no.
L frame fuse switch	400	TP&N	SL3P400N
L frame fuse switch	400	4	SL4P400N



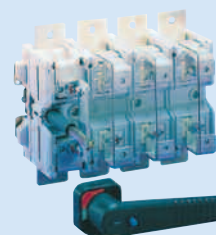
Loadbank 250

800A Panel Board Incoming and Outgoing Devices

630A/800A Fuse Switch Incoming Devices

- 630A/800A Incoming devices for LF1F8A enclosure
- Standard cable termination 630mm²

Incoming device type	Current rating (A)	No. of poles	Max cable termination (mm ²)	Cat. no.	Cable terminals
N frame fuse switch	630	TP&N	630	SN3P630N	SNCET
N frame fuse switch	800	TP&N	630	SN3P800N	SNCET
N frame fuse switch	630	4	630	SN4P630N	SNCET
N frame fuse switch	800	4	630	SN4P800N	SNCET



Incoming MCCB Devices

- 400A-800A Incoming devices for MMS15Y enclosure
- Standard cable termination 240mm²
- Triple-pole and four-pole MCCBs have adjustable thermal and magnetic overloads

Incoming device type	Current rating (A)	No. of poles	Max cable termination (mm ²)	Cat. no.
Y6 frame switch disconnecter	400	3	240	Y6B3P400D
Y6 frame MCCB	400	3	240	Y6H3P400T5
Y6 frame MCCB	630	3	240	Y6H3P630T5
Y6 frame MCCB	800	3	240	Y6H3P800T5
Y6 frame switch disconnecter	400	4	240	Y6B4P400D
Y6 frame MCCB	400	4	240	Y6H4P400T5
Y6 frame MCCB	630	4	240	Y6H4P630T5
Y6 frame MCCB	800	4	240	Y6H4P800T5



Outgoing MCCB Devices

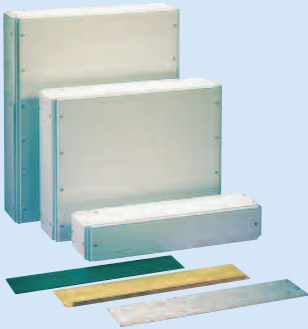
- Standard cable termination 95mm²
- Maximum cable termination is 150mm² using reduced palm width M8 cable lugs
- Triple-pole MCCBs have adjustable thermal and magnetic overloads

Device type	Current rating (A)	3-pole, 25kA cat. no. (adjustable overloads)	3-pole, 36kA cat. no. (adjustable overloads)	3-pole, 65kA cat. no. (adjustable overloads)
YA3 frame	16	-	-	-
YA3 frame	20	YA3N3P20T	YA3S3P20T	YA3J3P20T
YA3 frame	32	YA3N3P32T	YA3S3P32T	YA3J3P32T
YA3 frame	40	-	-	-
YA3 frame	50	YA3N3P50T	YA3S3P50T	YA3J3P50T
YA3 frame	63	YA3N3P63T	YA3S3P63T	YA3J3P63T
YA3 frame	80	-	-	-
YA3 frame	100	YA3N3P100T	YA3S3P100T	YA3J3P100T
YA3 frame	125	YA3N3P125T	YA3S3P125T	YA3J3P125T
YA3 frame	160	YA3N3P160T	YA3S3P160T	YA3J3P160T
YA3 frame	200	YA3N3P200T	YA3S3P200T	YA3J3P200T
YA3 frame	250	YA3N3P250T	YA3S3P250T	YA3J3P250T



Loadbank 250

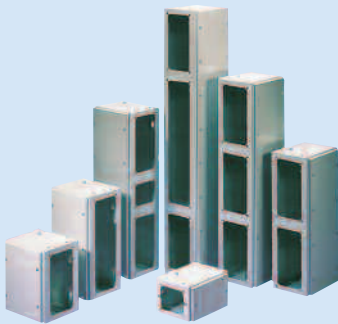
400A and 800A, Form 3 and 4, Panel Board Add-on Enclosures



General Purpose Enclosures

- IP4X Ingress Protection
- Enclosures are 750mm wide x 200 deep
- No top or bottom plates supplied (supplied with panel board)

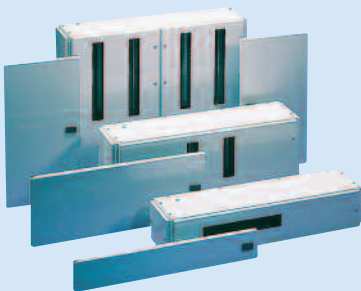
Description	Modular height	Height (mm)	Cat. no.
General purpose enclosure	1	152	LEBM1
General purpose enclosure	2	305	LEBM2
General purpose enclosure	3	457	LEBM3
General purpose enclosure	4	609	LEBM4
General purpose enclosure	5	762	LEBM5
General purpose enclosure	6	914	LEBM6



Cableway Extension Enclosures

- IP4X Ingress Protection
- Recommend for cables above 70mm²
- 250mm wide x 200mm deep
- No side plates supplied (supplied with panel board)

Description	Modular height	Height (mm)	Cat. no.
Cableway	1	152	LECM1
Cableway	2	305	LECM2
Cableway	3	457	LECM3
Cableway	4	609	LECM4
Cableway	5	762	LECM5
Cableway	6	914	LECM6
Cableway	8	1219	LECM8



MCB Distribution Board and Service Centre

- IP3X (IP4X with door fitted) Ingress Protection
- MCB distribution boards have fully shielded busbars and interconnections
- Space saving twin option TP&N distribution board option

Description	Modular height	Height (mm)	Cat. no.	Door kit cat. no.
17 MCB way SP&N distribution board	1	152	LDS17	LD1DS
6 TP way TP&N distribution board	2	305	LDT106X	LD1D06X
12 TP way TP&N distribution board	3	457	LDT112X	LD1D12X
2 x 12 TP way TP&N distribution board	4	609	LDT212X*	LD2D12X
24 way modular service centre	1	152	LDS24	LD1DS

*Only double module RCBOs can be fitted in this enclosure.



Twin YA5 Outgoing Housing (not design for use with Form 4 panel boards)

- Can be mounted direct to incoming enclosure without connection kit
- When mounting to 800A panelboard connection kits are required (LBSKE and LBCK8)
- Cableway extension enclosures are necessary to assist with cabling
- Terminal shields required per MCCB (YA5TC3P)
- Devices to be ordered separately (page 62)

Description	Modular height	Height (mm)	Weight (kg)	Cat. no.	Door kit cat. no.
Twin YA5 (400A max each)	3 modules	456	35	LB802YA5	LBDD02

Loadbank 250

400A and 800A, Form 3 and 4, Panel Board Metering Accessories

For easy selection of metering please refer to the chart on pages 80.

Cableway Metering Door Kits

- Incoming and outgoing metering utilises cableway extension boxes
- Metering door kits are available sized to the cableway extension boxes and are designed for panel mounted meters
- Includes DIN-rail for facility to mount current transformers and fuses

Description	Height	Cat. no
2 module metering door kit, excluding CTs and control wiring	2	LECMD2
3 module metering door kit, excluding CTs and control wiring	3	LECMD3
4 module metering door kit, excluding CTs and control wiring	4	LECMD4
5 module metering door kit, excluding CTs and control wiring	5	LECMD5
6 module metering door kit, excluding CTs and control wiring	6	LECMD6
8 module metering door kit, excluding CTs and control wiring	8	LECMD8

Panel Mounted Meters for Incoming Circuits

- 93mm x 96mm dimensions
- Low profile
- Fully programmable CT ratios
- Can be configured SP or TP

Device type	Outputs	Width (mm)	Cat. no.
1-phase/3-phase digital kWh meter	1 pulse	96	CI1-01-PUL
1-phase/3-phase digital multi-function meter	1 pulse	96	INT-1630-M-5-M-100
1-phase/3-phase digital multi-function meter	1 pulse & 1 Modbus	96	INT-1630-M-5-110
1-phase/3-phase digital multi-function meter	1 pulse	96	CI3-01-PUL
Optional pulse plug-in module for Ci1 meter	-	-	CI-PUL
Optional RS485 Modbus plug-in module for Ci meter	-	-	CI-MOD-01

Surge Protection Cableway Mounting Kits

- Optional Modbus plug-in module for Ci meter
- Easily installed within a standard cableway (2 modules onward)
- DIN-rail mounting for triple-pole MCB
- C/W 30Ka three-phase surge protector
- Remote status indication
- Site fault indication

Description	Height (mm)	Cat. no.
Cableway mounting frame c/w surge protector & remote indicator (1)	304	LECK2SM
2 module enclosure c/w surge protector & remote indicator (2)	304	LECK2SP

3-in-1 Current Transformers

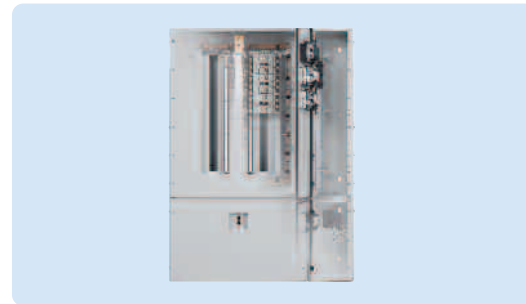
Description	Max cable size mm ²	Cat. no.
100A current transformer (sold singular)	95*/150**	M3N1-35-100/5
125A current transformer (sold singular)	95*/150**	M3N1-35-125/5
200A current transformer (sold singular)	95*/150**	M3N1-35-200/5
250A current transformer (sold singular)	95*/150**	M3N1-35-250/5
400A current transformer (sold singular)	185*/240**	M63N-400/5D
630A current transformer (sold singular)	240	M63N-600/5D
800A current transformer (sold singular)	240	M93L-800/5D

* Using standard cable lugs.

**Using reduced palm width cable lugs.

Metering Harnesses

Description	Cat. no.
Incoming meter loom	LBWI
Voltage tap off loom for outgoing metering	LBWP
CT harness for 1 outgoing meters	LBWCT
Power loom for 6 outgoing meters	LBWM6



Loadbank 250 Selection Chart - 400A Panel Boards and Incomer Housings

400A Panel Boards - Form 3

ASTA busbar short circuit rating of 36kA for 1 second	Outgoing device	Outgoing ways	Height	Weight (kg)	Panel cat. no.	Door kit cat. no.
Rating						
250A outgoing	MCCB/YA3	6	4 modules	36	LB406YA3	LBDD06
250A outgoing	MCCB/YA3	12	6 modules	52	LB412YA3	LBDD12
250A outgoing	MCCB/YA3	18	8 modules	66	LB418YA3	LBDD18

Incomer Housings - Form 3

Incoming device type	Current rating (A)	Height	Weight (kg)	Cat. no.
MCCB/YA3	250	3 modules	26	LB1YA3
MCCB/Y6	400	5 modules	45	LB1Y6
Direct connection	400	2 modules	18	LBDR4
Fuse switch	200	3 modules	37.5	LB1F2A
Fuse switch	400	5 modules	48.5	LB1F4A

Cableways - Form 2/3

Housing type	Standard apertures	Height	Weight (kg)	Cat. no.
Cableway	Yes	1 module	2	LECM1
Cableway	Yes	2 modules	4	LECM2
Cableway	Yes	3 modules	6	LECM3
Cableway	Yes	4 modules	8	LECM4
Cableway	Yes	5 modules	8	LECM5
Cableway	Yes	6 modules	12	LECM6
Cableway	Yes	8 modules	14	LECM8

Surge Protection Cableway Mounting Kits

Description	Height (mm)	Cat. no.
Cableway mounting frame c/w surge protector and remote indicator	304	LECK2SM
2 module enclosure c/w surge protector and remote indicator	304	LECK2SP

Housed Fuse Switch

Adaptor kits	Current rating (A)	Cat. no.
Kit for HBF3P200N, incl. connections	200	LBSK2B
Kit for HBF3P400N, incl. connections	400	LBSK4B

General Purpose Enclosures

Housing type	Height	Weight (kg)	Cat. no.
General purpose - uncut front plate	1 module	4	LEBM1
General purpose - uncut front plate	2 modules	10	LEBM2
General purpose - uncut front plate	3 modules	16	LEBM3
General purpose - uncut front plate	4 modules	22	LEBM4
General purpose - uncut front plate	5 modules	28	LEBM5
General purpose - uncut front plate	6 modules	34	LEBM6

Loadbank 250 Selection Chart - 400A Panel Boards Add-on Enclosure and Accessories

Metering

Description	Height (modules)	Height (mm)	Current rating (A)	Cable size (mm)	Cat. no.
Metering door kit	2	304	-	-	LECMD2
Metering door kit	3	456	-	-	LECMD3
Metering door kit	4	608	-	-	LECMD4
Metering door kit	5	760	-	-	LECMD5
Metering door kit	6	912	-	-	LECMD6
Metering door kit	8	1216	-	-	LECMD8
Incoming meter loom	-	-	-	-	LBWI
Voltage tap off for outgoing meter	-	-	-	-	LBWP
CT harness for 1 outgoing meter	-	-	-	-	LBWCT
Meter power loom for 1 outgoing meter	-	-	-	-	LBWM6
3-in-1 current transformers	-	-	100	95	M3N1-35-100/5
3-in-1 current transformers	-	-	125	95	M3N1-35-125/5
3-in-1 current transformers	-	-	150	95	M3N1-35-150/5
3-in-1 current transformers	-	-	200	95	M3N1-35-200/5
3-in-1 current transformers	-	-	250	95	M3N1-35-250/5
Current transformer	-	-	-	185	M63N-400/5
Current transformer	-	-	-	185	M63N-600/5
Current transformer	-	-	-	240	M93L-800/5
1-phase/3phase kWh meter with pulse	-	-	-	-	CI1-01-PUL
1-phase/3phase MF meter with pulse	-	-	-	-	INT-1630-M-5-M-100
1-phase/3phase MF meter with pulse and Modbus	-	-	-	-	INT-1630-M-5-M-110
1-phase/3phase MF meter with pulse	-	-	-	-	CI3-01-PUL
Optional pulse plug in module for Ci	-	-	-	-	CI-PUL-01
Optional RS485 Modbus plug in module for Ci	-	-	-	-	CI-MOD-01

MCB Distribution Boards

Outgoing ways				
SP&N	Height	Weight (kg)	Enclosure cat. no.	Door kit cat. no.
17	1 module	15	LDS17	LD1DS

TP&N				
	Height	Weight (kg)	Enclosure cat. no.	Door kit cat. no.
6	2 modules	23	LDT106X	LD1D06X
12	3 modules	30	LDT112X	LD1D12X
2x12	4 modules	35	LDT212X	LD2D12X

Service Centres				
Type	Height	Weight (kg)	Cat. no.	Door kit cat. no.
Service centre (24 DIN units)	1 module	10	LDS24	LD1DS

Accessories for 400A Panel Board Systems

Description	Cat. no.
Loadbank 250/distribution boards/service centres	
Blanking piece - 3-pole MCCB (1 front shield blank)	LBBP3PYA3
Vertical connection kit (400A)	LBCK4
Busbar terminals - extensions with shield, to connect both ends of busbar	LBSKE
Adaptor kit for 200A housed fuse switch	LBSK2B
Adaptor kit for 400A housed fuse switch	LBSK4B
Horizontal insulation kit	MXEPF
Steel end plate	LGES

Door Locking	Cat. no.
Door lock/key kit	DBXCL
Padlocking kit for door kits	DBXPL

Loadbank 250 Selection Chart - 400A Panel Board Circuit Protection Devices

Incoming Devices			
Current rating (A)		3-pole cat. no.	4-pole cat. no.
Max.	Min.		
YA3 switch disconnecter			
250	-	YA3B3P250D	YA3B4P250D
YA3 frame MCCB - 25kA			
250	160	YA3N3P250T	YA3N4P250T
YA3 frame MCCB - 36kA			
250	160	YA3S3P250T	YA3S4P250T
Y6 switch disconnecter			
400	-	Y6B3P400D	Y6B4P400D
Y6 frame MCCB - 50kA			
400	250	Y6H3P400T5	Y6H4P400T5
200A skeleton switches			
200	-	SF3P200N	SF4P200
400A skeleton switches			
400	-	SL3P400N	SL4P400
400A direct connection			
400	-	-	LBDR4

Outgoing Devices for Form 2 Panel Boards		
Current rating (A)	1-pole cat. no.	3-pole cat. no.
Max.		
YA3 MCCB - 25kA		
16	YA3N1P16T	-
20	YA3N1P20T	YA3N3P20T
32	YA3N1P32T	YA3N3P32T
40	YA3N1P40T	-
50	YA3N1P50T	YA3N3P50T
63	YA3N1P63T	YA3N3P63T
80	YA3N1P80T	-
100	YA3N1P100T	YA3N3P100T
125	YA3N1P125T	YA3N3P125T
160	YA3N1P160T	YA3N3P160T
200	-	YA3N3P200T
250	-	YA3N3P250T
YA3 MCCB - 36kA		
20	-	YA3S3P20T
32	-	YA3S3P32T
50	-	YA3S3P50T
63	-	YA3S3P63T
100	-	YA3S3P100T
125	-	YA3S3P125T
160	-	YA3S3P160T
200	-	YA3S3P200T
250	-	YA3S3P250T

Loadbank 250 Selection Chart - 400A Panel Board and Incoming Devices Accessories

Accessories for 400A Skeleton Switches

Description	Cat. no.
Solid links (set of 1)	HLL400
Terminal barriers (set of 3)	SLTB
Fuse shrouds	SLFS
Terminal shrouds and barriers	SLTS
2-blank auxiliary switch	SAUX2N
4-blank auxiliary switch	SAUX4N
6-blank auxiliary switch	SAUX6N

Y6 Frame Accessories	
Description	Cat. no.
Terminal covers 3-pole	
Interphase barriers (set of 2)	Y5TB3P
Terminal covers 4-pole	
Interphase barriers (set of 3)	Y5TB4P
Terminations 4-pole	
Extension terminal bars	Y6XT4P
Locking devices	
Dolly padlock device	Y6DL
Shunt trips	
Shunt 100-115V AC	Y6ST115AC
Shunt 200-450V AC	Y6ST450AC
Shunt 24V DC	Y6ST24DC
Under-voltage release	
UVR 100-120V AC	Y6UVR120AC
UVR 200-240V AC	Y6UVR240AC
UVR 380-450V AC	Y6UVR450AC
UVR 24V DC	Y6UVR24DC
Auxiliary switches	
1AB auxiliary switch	Y6AUX1
2AB auxiliary switch	Y6AUX2
Alarm switch + 1 auxiliary	Y6AUXAL

Loadbank 250 Selection Chart - 400A Panel Board Outgoing Devices Accessories

Description	Cat. no.
Terminal covers 3-pole	
YA3 frame interphase barrier (set of 1) 2 required for 3-pole device	YA3TB
YA3 frame long terminal shroud (set of 1)	YA3TS3P
YA3 frame short terminal shroud (set of 1)	YA3TS3PS
Terminations 3-pole	
YA3 frame cable clamps 35-120mm ² (set of 3)	YA3CC3P
Terminal covers 4-pole	
YA3 frame interphase barrier (set of 1) 3 required for 3-pole device	YA3TB
YA3 frame long terminal shroud (set of 1)	YA3TS4P
YA3 frame short terminal shroud (set of 1)	YA3TS4PS
Terminations 4-pole	
YA3 frame cable clamps 35-120mm ² (set of 4)	YA3CC4P
Shunt trips	
YA frame shunt trip 100-120V AC	YAST115AC
YA frame shunt trip 200-240V AC	YAST240AC
YA frame shunt trip 380-450V AC	YAST450AC
YA frame shunt trip 24V DC	YAST24DC
Auxiliary and alarm switches	
YA frame 1AB auxiliary switch	YAAUX1
YA frame alarm switch	YAAL
Under-voltage release	
YA frame under-voltage release 100-120V AC	YAUVR120AC
YA frame under-voltage release 200-240V AC	YAUVR240AC
YA frame under-voltage release 380-450V AC	YAUVR450AC
YA frame under-voltage release 24V DC	YAUVR24DC
Locking devices	
YA frame dolly padlock device	YADL1
YA frame Castell* (DS1) lock direct mtg. trapped 'on'	YAACL

*Castell is a trademark of Castell Safety International Limited.

Loadbank 250 Selection Chart - 800A Panel Boards and Incomer Housings

800A Panel Boards - Form 3						
ASTA busbar short circuit rating of 50kA for 1 second	Outgoing device	Outgoing ways	Height	Weight (kg)	Panel cat. no.	Door kit cat no.
250A outgoing	MCCB/YA3	6	4 modules	42	LB806YA3	LBDD06
250A outgoing	MCCB/YA3	12	6 modules	62	LB812YA3	LBDD12
250A outgoing	MCCB/YA3	18	8 modules	78	LB818YA3	LBDD18

Incomer Housings - Form 3					
Incomer device type	Current rating (A)		Height	Weight (kg)	Cat. no.
MCCB/Y6	630		5 modules	45	LB1Y6
MCCB/Y7	800		6 modules	69	LB1Y7
Direct connection	800		3 modules	23	LBDR8

Outgoing Housings - Form 3						
Incomer device type	Current rating (A)	Outgoing ways	Height	Weight (kg)	Panel cat. no.	Door kit cat. no.
2x YA5 MCCB	400	2	3 modules	25	LB802YA5	LBDD02

800A Panel Boards - Form 4						
ASTA busbar short circuit rating of 50kA for 1 second	Outgoing device	Outgoing ways	Height	Weight (kg)	Panel cat. no.	Door kit cat no.
250A outgoing	MCCB/YA3	6	5 modules	59	LF806YA	MXD06
250A outgoing	MCCB/YA3	10	8 modules	98	LF810YA	MXD10

Incomer Housings - Form 4					
Device type housing	Current rating (A)		Height	Weight (kg)	Cat. no.
Fuse switch	630/800		6 modules	67	LF1F8A
Y6 frame MCCB	800		5 modules	59	MMS15Y
Y6 connection kit					MCFMY6

Shielding - Form 4			
Description	Additional housing		Cat. no.
70mm ² cables			LFS41YA
150mm ² cables	Cableway		LFS42YA

Surge Protection Cableway Mounting Kits		
Description	Height (mm)	Cat. no.
Cableway mounting frame c/w surge protector and remote indicator	304	LECK2SM
2 module enclosure c/w surge protector and remote indicator	304	LECK2SP

Loadbank 250 Selection Chart - 800A Panel Boards Add-on Enclosures and Accessories

Metering

Description	Height (modules)	Height (mm)	Current rating (A)	Cable size (mm)	Cat. no.
Metering door kit	2	304	-	-	LECMD2
Metering door kit	3	456	-	-	LECMD3
Metering door kit	4	608	-	-	LECMD4
Metering door kit	5	760	-	-	LECMD5
Metering door kit	6	912	-	-	LECMD6
Metering door kit	8	1216	-	-	LECMD8
Incoming meter loom	-	-	-	-	LBWI
Voltage tap off for outgoing meter	-	-	-	-	LBWP
CT harness for 1 outgoing meter	-	-	-	-	LBWCT
Meter power loom for 1 outgoing meter	-	-	-	-	LBWM6
3-in-1 current transformers	-	-	100	95	M3N1-35-100/5
3-in-1 current transformers	-	-	125	95	M3N1-35-100/5
3-in-1 current transformers	-	-	150	95	M3N1-35-100/5
3-in-1 current transformers	-	-	200	95	M3N1-35-100/5
3-in-1 current transformers	-	-	250	95	M3N1-35-100/5
Current transformer	-	-	-	185	M63N-400/5
Current transformer	-	-	-	185	M63N-600/5
Current transformer	-	-	-	240	M93L-800/5
1-phase/3phase kWh meter with pulse output	-	-	-	-	CI1-01-PUL
1-phase/3phase MF meter with pulse output	-	-	-	-	INT-1630-M-5-M-100
1-phase/3phase MF meter with pulse and Modbus output	-	-	-	-	INT-1630-M-5-M-110
1-phase/3phase MF meter with pulse output	-	-	-	-	CI3-01-PUL
Optional pulse plug in module for Ci meter	-	-	-	-	CI-PUL-01
Optional RS485 Modbus plug in module for Ci meter	-	-	-	-	CI-MOD-01

MCB Distribution Boards

Outgoing ways				
SP&N	Height	Weight (kg)	Enclosure cat. no.	Door kit cat. no.
17	1 module	15	LDS17	LD1DS

TP&N				
	Height	Weight (kg)	Enclosure cat. no.	Door kit cat. no.
6	2 modules	23	LDT106X	LD1D06X
12	3 modules	30	LDT112X	LD1D12X
2x12	4 modules	35	LDT212X	LD2D12X

Service Centres				
Type	Height	Weight (kg)	Cat. no.	Door kit cat. no.
Service centre (24 DIN units)	1 module	10	LDS24	LD1DS

Accessories for 400A Panel Board Systems

Description	Cat. no.
Loadbank 250/distribution boards/service centres	
Blanking piece - 3-pole MCCB (1 front shield blank)	LBBP3PYA3
Vertical connection kit (800A)	LBCK8
Busbar terminals - extensions with shield, to connect both ends of busbar	LBSKE
Adaptor kit for 200A housed fuse switch	LBSK2B
Adaptor kit for 400A housed fuse switch	LBSK4B
Horizontal insulation kit	MXEPF
Steel end plate	LGES

Door Locking		Cat. no.
Door lock/key kit		DBXCL
Padlocking kit for door kits		DBXPL

Loadbank 250 Selection Chart - 800A Panel Boards Incoming Devices

Incoming Devices - Form 3 Panel Boards			
Current rating (A)		3-pole cat. no.	4-pole cat. no.
Max.	Min.		
Y6 Frame Switch Disconnecter			
630	-	Y6B3P630D	Y6B4P630D
Y6 Frame MCCB Thermal/Magnetic - I_{cu} 50 kA			
630	400	Y6H3P630T5	Y6H4P630T5
Y6 Frame MCCB Electronic - I_{cu} 50kA			
630	315	Y6H3P630E	Y6H4P630E
Y7 Frame Switch Disconnecter			
800	-	Y7B3P800D	Y7B4P800D*
Y7 Frame MCCB Electronic - I_{cu} 65kA			
1000	500	Y7J3P1000E	Y7J4P1000E*

*This MCCB must be set at 800A maximum.

Incoming Devices - Form 4 Panel Boards			
Fuse Switch		3-pole+N cat. no.	4-pole+N cat. no.
Current rating (A)			
630		SN3P630N	SN4P630
800		SN3P800N	SN4P800

Y6 Switch Disconnecter Panel Boards			
Current rating (A)		3-pole cat. no.	4-pole cat. no.
800		Y6B3P800D	Y6B4P800D

Y6 Frame MCCB Thermal/Magnetic			
Current rating (A)			
Max.	Min.		
800	500	Y6H3P800T5	Y6H4P800T5

Y6 Frame MCCB Electronic			
Current rating (A)			
Max.	Min.		
800	400	Y6H3P800E	Y6H4P800E

Loadbank 250 Selection Chart - 800A Panel Board Incoming Accessories

630/800A Skeleton Switches Accessories

Description	Cat. no.
Cable extension terminals (set of 8)	SNCET
Solid links (set of 1)	HNL800
Terminal barriers (set of 3)	Supplied
Fuse shrouds	SNFS

Y6 Frame Accessories

Description	Cat. no.
Terminal covers 3-pole	
Interphase barriers (set of 2)	Y5TB3P
Terminal covers 4-pole	
Interphase barriers (set of 3)	Y5TB4P
Terminations 4-pole	
Extension terminal bars	Y6XT4P
Locking devices	
Dolly padlock device	Y6DL
Shunt trips	
Shunt 100-120V AC	Y6ST115AC
Shunt 200-450V AC	Y6ST450AC
Shunt 24V DC	Y6ST24DC
Under-voltage release	
UVR 100-120V AC	Y6UVR120AC
UVR 200-240V AC	Y6UVR240AC
UVR 380-450V AC	Y6UVR450AC
UVR 24V DC	Y6UVR24DC
Auxiliary switches	
1AB auxiliary switch	Y6AUX1
2AB auxiliary switch	Y6AUX2
Alarm switch + 1 auxiliary	Y6AUXAL

Loadbank 250 Selection Chart - 800A Panel Board Incoming Device Accessories

Y7 Frame Accessories	
Description	Cat. no.
Terminal covers 3-pole	
Interphase barriers (set of 2)	Y5TB3P
Terminal covers 4-pole	
Interphase barriers (set of 3)	Y5TB4P
Locking devices	
Dolly padlock device	Y7DL
Shunt trips	
Shunt 100-120V AC	Y7ST115AC
Shunt 200-450V AC	Y7ST450AC
Shunt 24V DC	Y7ST24DC
Under-voltage release	
UVR 100-120V AC	Y7UVR120AC
UVR 200-240V AC	Y7UVR240AC
UVR 380-450V AC	Y7UVR450AC
UVR 24V DC	Y7UVR24DC
Auxiliary switches 3-pole MCCB	
1AB auxiliary switch	Y7AUX3P1
2AB auxiliary switch	Y7AUX3P2
Alarm switch + 1 auxiliary	Y7AUX3PAL
Auxiliary switches 4-pole MCCB	
1AB auxiliary switch	Y7AUX4P1
2AB auxiliary switch	Y7AUX4P2
Alarm switch + 1 auxiliary	Y7AUX4PAL

Loadbank 250 Selection Chart - 800A Panel Boards Outgoing Devices

Outgoing Devices for Form 3 Panel Boards			
Current rating (A)		1-pole cat. no.	3-pole cat. no.
Max.	Min.		
YA3 frame MCCB - 25kA			
16	-	YA3N1P16T	-
20	-	YA3N1P20T	YA3N3P20T
32	-	YA3N1P32T	YA3N3P32T
40	-	YA3N1P40T	-
50	-	YA3N1P50T	YA3N3P50T
63	-	YA3N1P63T	YA3N3P63T
80	-	YA3N1P80T	-
100	-	YA3N1P100T	YA3N3P100T
125	-	YA3N1P125T	YA3N3P125T
160	-	YA3N1P160T	YA3N3P160T
200	-	-	YA3N3P200T
250	-	-	YA3N3P250T
YA3 frame MCCB - 36kA			
50	32	-	YA3S3P50T
63	40	-	YA3S3P63T
100	63	-	YA3S3P100T
125	80	-	YA3S3P125T
160	100	-	YA3S3P160T
200	125	-	YA3S3P200T
250	160	-	YA3S3P250T

Outgoing Devices for Form 4 Panel Boards				
Current rating (A)		4-pole 25kA cat. no.	4-pole 36kA cat. no.	4-pole 65kA cat. no.
Max.	Min.			
YA3 frame MCCB				
20	13	YA3N4P20T	-	-
32	20	YA3N4P32T	-	-
50	32	YA3N4P50T	YA3S4P50T	YA3J4P50T
63	40	YA3N4P63T	YA3S4P63T	YA3J4P63T
100	63	YA3N4P100T	YA3S4P100T	YA3J4P100T
125	80	YA3N4P125T	YA3S4P125T	YA3J4P125T
160	100	YA3N4P160T	YA3S4P160T	YA3J4P160T
200	125	YA3N4P200T	YA3S4P200T	YA3J4P200T
250	160	YA3N4P250T	YA3S4P250T	YA3J4P250T

Loadbank 250 Selection Chart 800A Panel Board Outgoing Device Accessories

Description	Cat. no.
Terminal covers 3-pole	
YA3 frame interphase barrier (set of 1) 2 required for 3-pole device	YA3TB
YA3 frame long terminal shroud (set of 1)	YA3TS3P
YA3 frame short terminal shroud (set of 1)	YA3TS3PS
Terminations 3-pole	
YA3 frame cable clamps 35-120mm ² (set of 3)	YA3CC3P
Terminal covers 4-pole	
YA3 frame interphase barrier (set of 1) 3 required for 3-pole device	YA3TB
YA3 frame long terminal shroud (set of 1)	YA3TS4P
YA3 frame short terminal shroud (set of 1)	YA3TS4PS
Terminations 4-pole	
YA3 frame cable clamps 35-120mm ² (set of 4)	YA3CC4P
Shunt trips	
YA frame shunt trip 100-120V AC	YAST115AC
YA frame shunt trip 200-240V AC	YAST240AC
YA frame shunt trip 380-450V AC	YAST450AC
YA frame shunt trip 24V DC	YAST24DC
Auxiliary and alarm switches	
YA frame 1AB auxiliary switch	YAAUX1
YA frame alarm switch	YAAL
Under-voltage release	
YA frame under-voltage release 100-120V AC	YAUVR120AC
YA frame under-voltage release 200-240V AC	YAUVR240AC
YA frame under-voltage release 380-450V AC	YAUVR450AC
YA frame under-voltage release 24V DC	YAUVR24DC
Locking devices	
YA frame dolly padlock device	YADL1
YA frame Castell* (DS1) lock to be ordered separately	YA CL
Motor actuator	
YA3 motor actuator AC 100-110V	YA3MA110
YA3 motor actuator AC 230-240V	YA3MA240

*Castell is a trademark of Castell Safety International Limited.

Loadbank 250 Meter Selection Process

Loadbank 200/250

The Loadbank 200/250 metering facilities utilise standard cableway extension enclosures with optional door kits designed for panel mounted meters. The size of the cableway will determine the corresponding metering door kit. Where cable sizes exceed 70mm a recommendation would be to include two cableway extension enclosures to facilitate easy wiring. The same could be advised when fully populating an 18 way panel board with meters. Current transformers and fuses can be DIN-rail mounted within the cableways using the facilities provided within the optional door kits.

Panel-board enclosures

Description	Cat. no.
400A, 6 way, Form 3	LB406YA3
400A, 8 way, Form 3	LB412YA3
400A, 12 way, Form 3	LB418YA3
800A, 6 way, Form 3	LB806YA3
800A, 12 way, Form 3	LB812YA3
800A, 18 way, Form 3	LB818YA3
800A, 6 way, Form 4	LF806YA
800A, 10 way, Form 4	LF810YA

Description

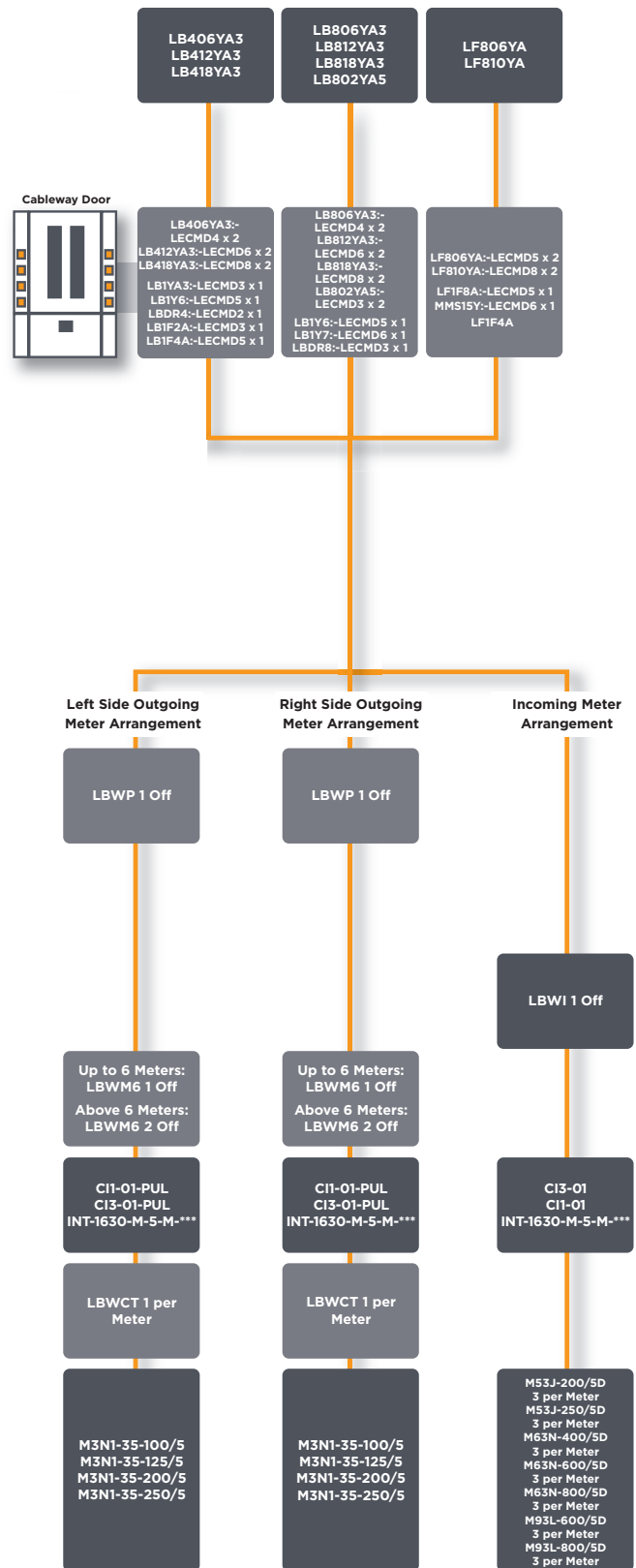
Description	Cat. no.
2 module metering mounting kit, (2 meter positions)	LECMD2
3 module metering mounting kit, (3 meter positions)	LECMD3
4 module metering mounting kit, (4 meter positions)	LECMD4
5 module metering mounting kit, (6 meter positions)	LECMD5
6 module metering mounting kit, (6 meter positions)	LECMD6
8 module metering mounting kit, (9 meter positions)	LECMD8

Description

Description	Cat. no.
3-in-1 100A current transformers	M3N1-35-100/5
3-in-1 125A current transformers	M3N1-35-125/5
3-in-1 200A current transformers	M3N1-35-200/5
3-in-1 250A current transformers	M3N1-35-250/5
400A current transformer (sold singular)	M63N-400/5D
630A current transformer (sold singular)	M63N-600/5D
800A current transformer (sold singular)	M93L-800/5D

Description

Description	Cat. no.
Digital multi-function meter with one pulse outputs	INT-1630-M-5-M-100
Digital multi-function meter with one pulse output and one RS485 output	INT-1630-M-5-M-110
Digital kilowatt hour meter with one pulse output	CI1-01-PUL
Digital multi-function meter with one pulse output	CI3-01-PUL



About TE Connectivity

TE Connectivity is a global, \$12.1 billion company that designs and manufactures over 500,000 products that connect and protect the flow of power and data inside the products that touch every aspect of our lives. Our nearly 100,000 employees partner with customers in virtually every industry – from consumer electronics, energy and healthcare, to automotive, aerospace and communication networks – enabling smarter, faster, better technologies to connect products to possibilities.

While TE has made every reasonable effort to ensure the accuracy of the information in this catalog, TE does not guarantee that it is error-free, nor does TE make any other representation, warranty or guarantee that the information is accurate, correct, reliable or current. TE reserves the right to make any adjustments to the information contained herein at any time without notice. TE expressly disclaims all implied warranties regarding the information contained herein, including, but not limited to, any implied warranties of merchantability or fitness for a particular purpose. The dimensions in this catalog are for reference purposes only and are subject to change without notice. Specifications are subject to change without notice. Consult TE for the latest dimensions and design specifications. Dorman Smith three line logo, Integra, Loadline, TE connectivity (logo) and TE Connectivity are trademarks of the TE Connectivity Ltd. family of companies. Crompton is a trademark of Crompton Parkinson and is used by TE Connectivity Ltd. under a licence. Other logos, product and Company names mentioned herein may be trademarks of their respective owners.

TE Energy - innovative and economical solutions for the electrical power industry: cable accessories, connectors & fittings, insulators & insulation, surge arresters, switching equipment, street lighting, power measurement and control.

Tyco Electronics UK Ltd

TE Energy
Freebournes Road
Witham, Essex CM8 3AH

Phone: +44 (0)870 870 7500
Fax: +44 (0)870 240 5289
Email: dormansmithswitchgear@te.com
E-fax: +44 (0)1793 602431

www.dormansmithswitchgear.com
www.energy.te.com

